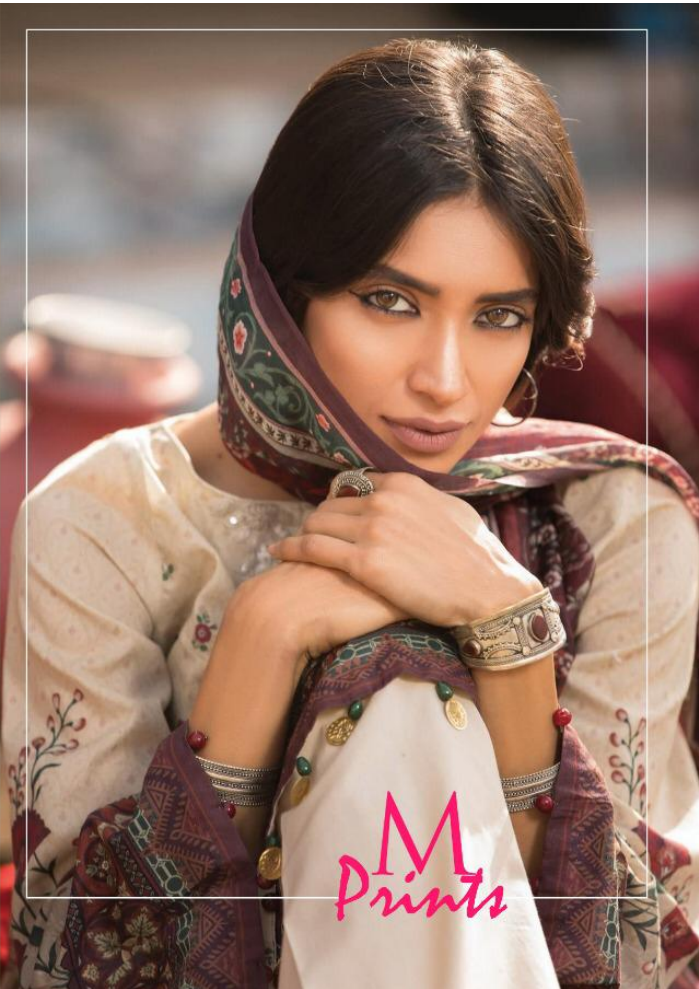
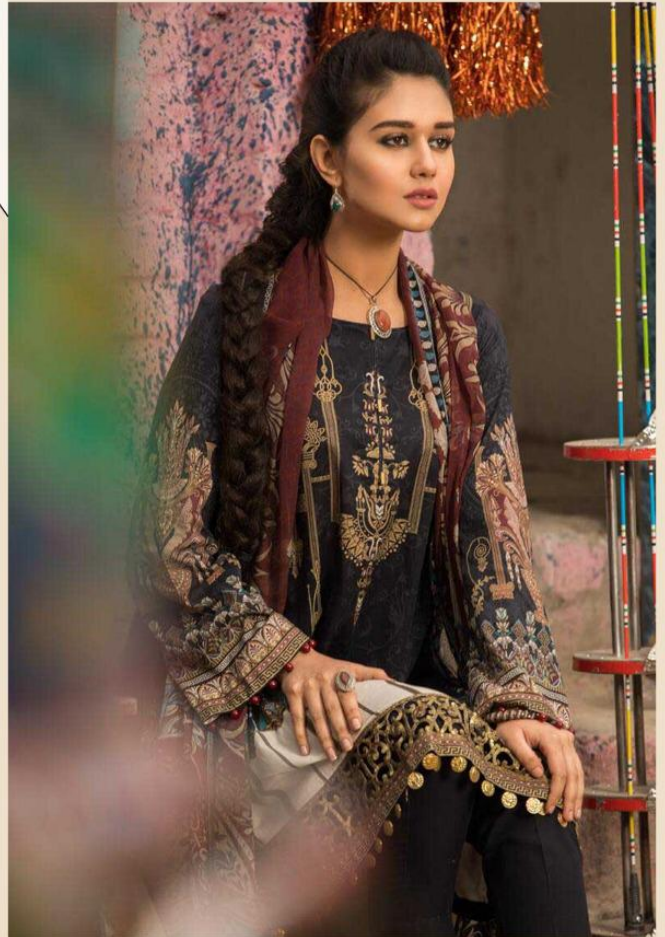




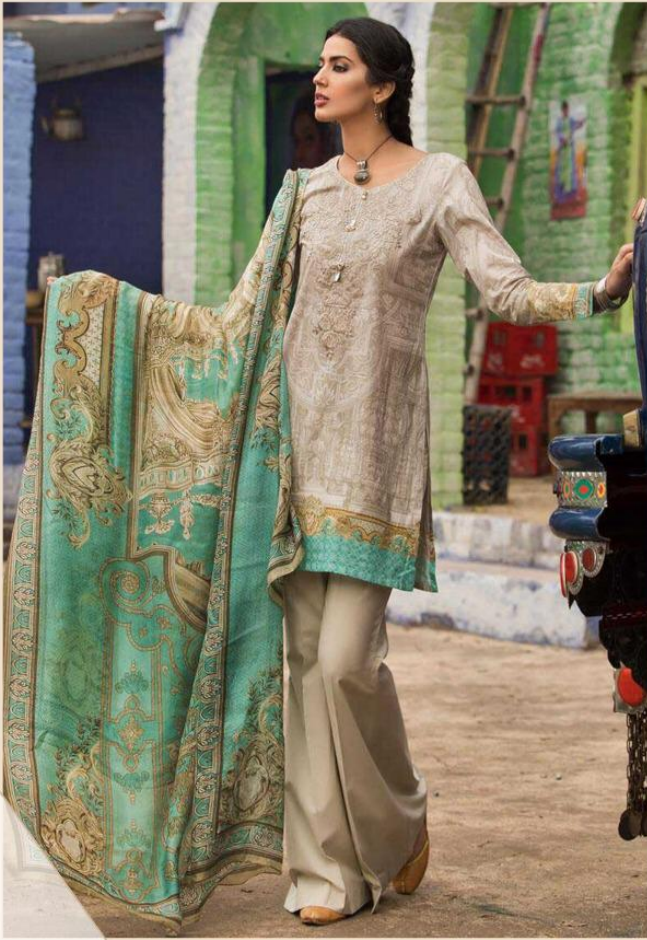
"complimentary copy not for sell"



M  
Prints







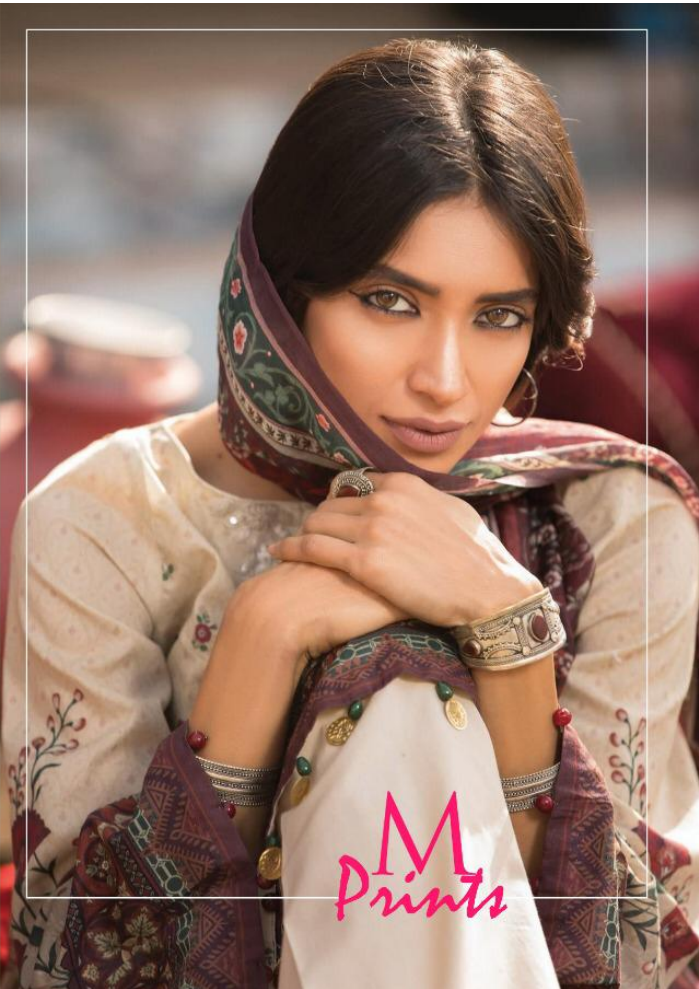
A woman with dark hair is seated, looking off to the side. She is wearing a sleeveless, light-colored dress with intricate floral and geometric patterns. A pink and white patterned shawl is draped over her shoulders. She is adorned with multiple bangles on her right wrist and a large, ornate ring on her right hand. She is holding a small, green and yellow patterned object in her hands. To her right is a large, round, reddish-brown earthen pot (matka) resting on a wooden stand. The background is a rustic, stone wall. The overall aesthetic is traditional and cultural.

# Tradition TREND





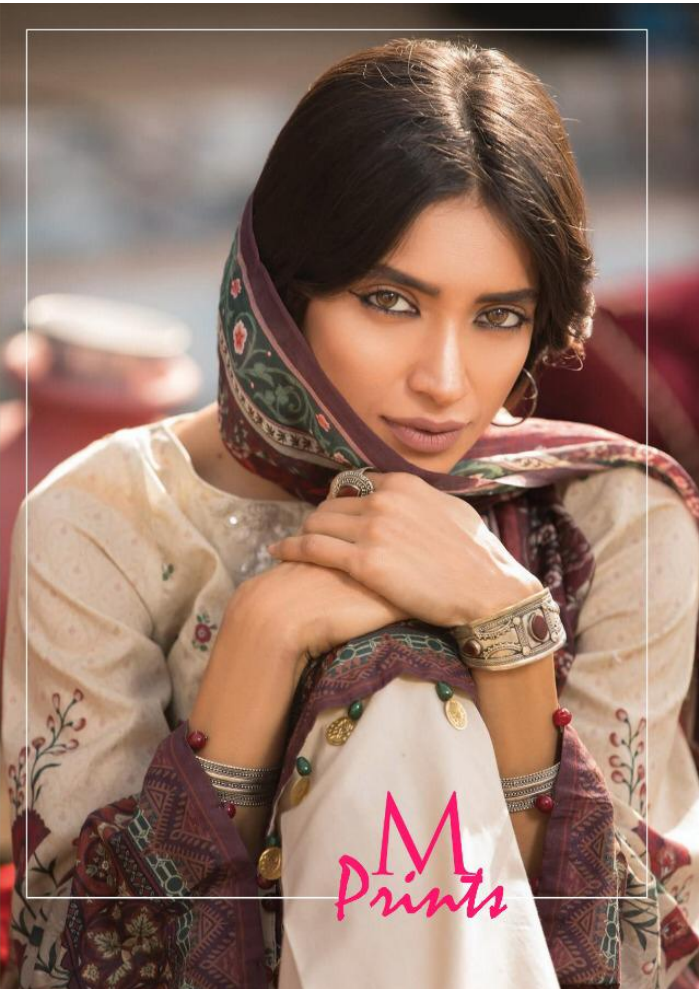
"complimentary copy not for sell"



M  
Prints



"complimentary copy not for sell"



M  
Prints



S

