





fiona®

ORIGINAL

21934







EMPTACE  
JULY 2017



fiona

21933







fiona

MALAIKA A R O R A





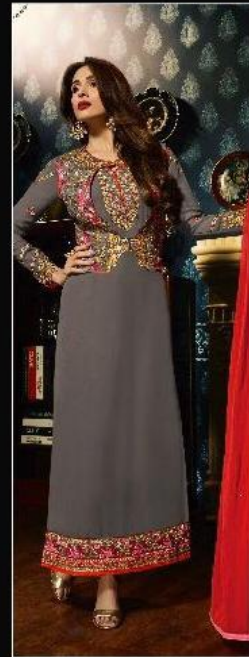
21931



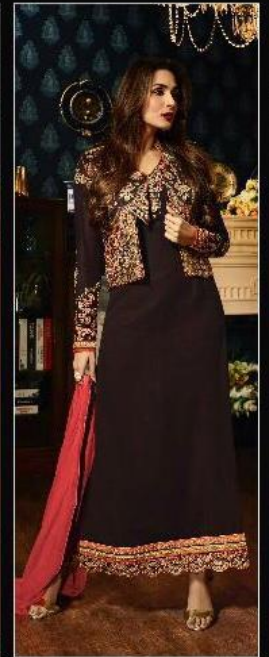
21932



21933



21934



21935

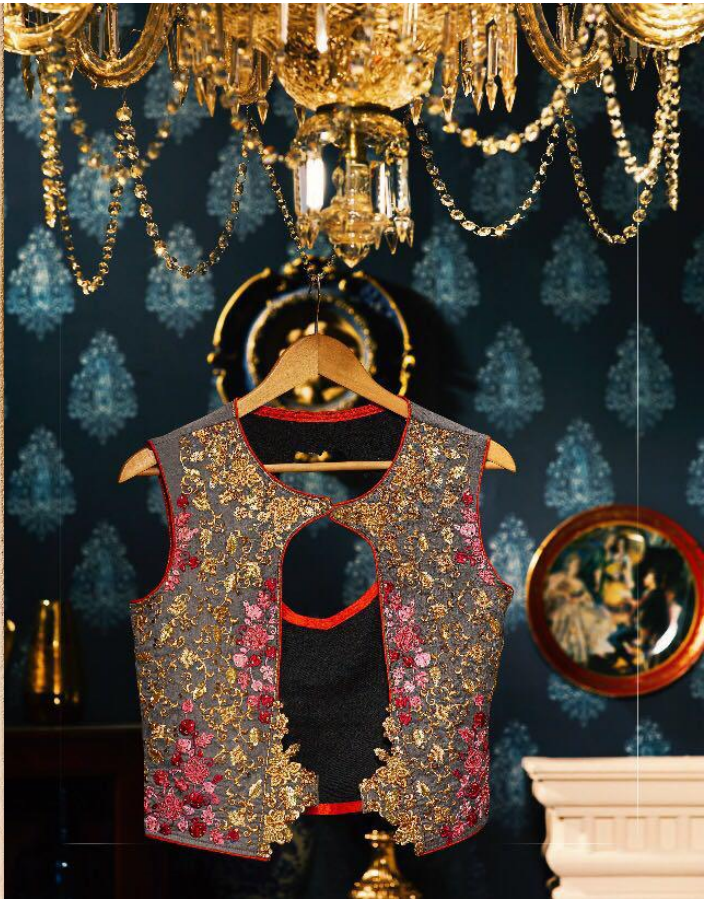






# MALIKA KOTTI

D.NO	FABRICS	USP
21931	TOP- FAUX GORGETTE (WITH KOTTI) BOTTOM—HEAVY SANTOON INNER— HEAVY SANTOON DUPATTA- NAZMEEN	TONE TO TONE RESHAM EMBROIDERY WITH WORK TOP WITH KOTTI
21932	TOP- FAUX GORGETTE (WITH KOTTI) BOTTOM—HEAVY SANTOON INNER— HEAVY SANTOON DUPATTA- NAZMEEN	TONE TO TONE RESHAM EMBROIDERY WITH WORK TOP WITH KOTTI
21933	TOP- FAUX GORGETTE (WITH KOTTI) BOTTOM—HEAVY SANTOON INNER— HEAVY SANTOON DUPATTA- NAZMEEN	TONE TO TONE RESHAM EMBROIDERY WITH WORK TOP WITH KOTTI
21934	TOP- FAUX GORGETTE (WITH KOTTI) BOTTOM—HEAVY SANTOON INNER— HEAVY SANTOON DUPATTA- NAZMEEN	TONE TO TONE RESHAM EMBROIDERY WITH WORK TOP WITH KOTTI
21935	TOP- FAUX GORGETTE (WITH KOTTI) BOTTOM—HEAVY SANTOON INNER— HEAVY SANTOON DUPATTA- NAZMEEN	TONE TO TONE RESHAM EMBROIDERY WITH WORK TOP WITH KOTTI







21935

PEACE

fiona



Friona  
Pashmina  
ELEGANT  
21935





friona®  
ELEGANCE  
21933